



**EL DORADO CITY COMMISSION - WORK SESSION AGENDA  
CITY HALL – 220 E. FIRST AVENUE  
August 30, 2023 - 5:00 PM**

**Work Session Discussion Items:**

- a. 2024 Budget Discussion
- b. Downtown Stormwater Project

**Regular Agenda Preview:**

- a. Items to be Placed on the Consent Agenda
  - i. Meeting Minutes from August 21, 2023.
- ii. Resolution of Intent to Participate in the Walnut River Bridge Project
  - iii. Prairie Trails Agreement
  - iv. Walnut River Brewery Liquor Permit Resolution
  - v. Planning Commission Appointment- Aaron Cline for a term set to expire 05/01/2026
- b. Items to be Placed on the Regular Agenda
- c. Items to be Placed on the Land Bank Consent Agenda
- d. Executive Session

**Reports:**

- a. City Commission Reports
- b. City Manager Report

TO: City Commission  
FROM:  
SUBJ: Downtown Stormwater Project  
DATE: August 30, 2023

**Background:**

During the initial design of the Central Avenue Project, we discovered a need to consider additional storm sewer pipes based on modeling data. Professional Engineering Consultants (PEC) will be presenting their findings during the upcoming Work Session.

Project schedule:

Preliminary Plans: Expected completion by October 2023

Final Plans: Anticipated by February 2024

Construction: Scheduled for 2024

**Attachments:**

1. 8-30-23 WS Gordy Storm Sewer

**Policy Issue:**

**Fiscal Impact:**

The Central Avenue Improvement project includes storm sewer upgrades, waterline improvements, and paving. The cost estimates for this project are as follows:

Original Estimate: \$4,271,163.79

Updated Estimate (including additional work): \$4,609,054.53

**Trade-offs:**

**Staff Recommendation:**

Staff recommends proceeding with the additional storm sewer work to enhance the projects effectiveness.

**Commission Action:**

# MEMO



**TO:** City of El Dorado  
220 E 1<sup>st</sup> Avenue  
El Dorado, KS 67042

**ATTENTION:** Scott Rickard – Engineering Director

**FROM:** Ben Mabry, P.E.

**REFERENCE:** Project Status Update

**DATE:** August 25, 2023

**PROJECT NO.:** 31-217029-012-0347

**PROJECT:** El Dorado – Central Avenue Water, Storm Sewer and Roadway Improvements

**COPIES TO:** Jason Patty – Public Utilities Director, Tim Aziere (PEC), Trevor Kaufman (PEC), Kyle Kelsey (PEC)

Please advise immediately of any misconceptions or omissions you believe to be contained herein.

---

## Project Description:

This project shall consist of water main improvements along Central Avenue from Griffith to Denver, roadway and storm sewer improvements along Central Avenue from outfall at East Park to Star, coordination of KDOT project along Central Avenue from Griffith to Taylor and conceptual stormwater enhancements in East Park near the discharge of the proposed storm sewer. Based on storm water modeling results and discussions with City staff, an extension of storm sewer north along Gordy is being evaluated to improve the 10-year flooding conditions in downtown El Dorado.

## Update:

PEC is working toward preliminary plan production on the Central Avenue portion of the paving, stormwater, and waterline replacement project.

PEC submitted a supplemental agreement for the expanded scope of services to include the Gordy Storm Bypass design and curb extensions (Pedestrian Safety Bulb-Outs) at 1<sup>st</sup> & Main and Pine & Main design. PEC to meet with City on 8/31/23 prior to commission meeting that evening to go over supplemental and additional project improvements associated with them. Graphics created for stormwater improvements based on current & future conditions for meeting.

## Anticipated Project Schedule:

Preliminary Plans:	October 2023*
Final Plans:	February 2024*
Construction:	2024

\* may need to be adjusted if additional scope is added (survey needed)

# MEMO



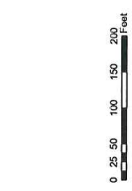
## Current Status:

- Field Survey: *Completed*.
  - Additional required for Gordy Storm Bypass and 1<sup>st</sup> & Main and Pine & Main Pedestrian Safety Bulb-Outs.
- Storm Water Modeling: *Completed*
  - The existing conditions model is completed and was presented to City staff.
  - The proposed improvements models are completed and was presented to City staff.
  - 10-year and 100-year flooding conditions maps for the existing conditions, original concept, and new concept created for presentation.
- Concept: *Completed*
  - Results of modeling was to design an 8x3 Reinforced Concrete Box (RCB) Culvert from 2<sup>nd</sup> & Gordy down to Central & Gordy to tie into a 6x6 RCB to run down Central to the outfall between the Sunny Stop Gas Station and the Kansas Oil Museum.
  - Preliminary alignments for Water Main and Storm Sewer are completed and presented to City staff.
  - Upon review and approval of the proposed storm water model scenario, PEC finalized concept alignments for the Water Main and Storm Sewer.
- Preliminary Plans: *In Progress*
  - Plan production underway for Water Main and Storm Sewer on Central Avenue.
  - Tying existing storm networks into proposed storm.
  - Phasing of the project to leave Central open to traffic throughout construction.
  - Determining impacts to private utilities.
  - Pavement marking and configuration on Central Ave added to plan set.
  - PEC/KDOT Standards added to plan set.
- Final Plans: *Pending completion of Preliminary Plans*.

## Outstanding Items:

- Decision on Gordy Storm Bypass Design.
- Design on 1<sup>st</sup> & Main and Pine & Main Pedestrian Safety Bulb-Outs Design.

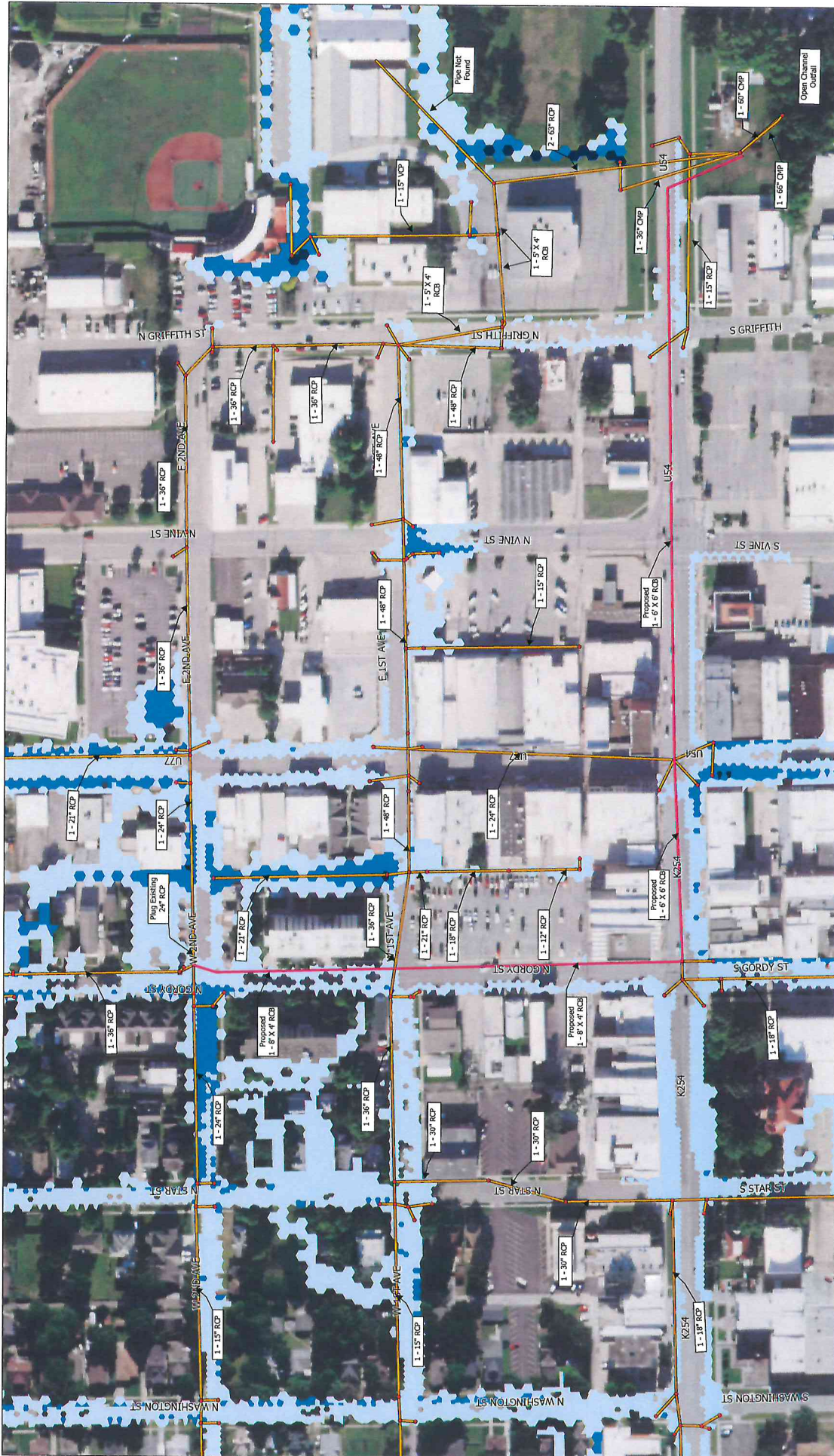




# Original Concept Flooding - 10-Year Event

City of El Dorado





# New Concept Flooding - 10-Year Event

City of El Dorado

### Legend

- New Concept Proposed Conduits
- Junctions
- Existing Storm Conduits
- MAXDEPTH**
- 0
- Use then 0.5'
- 0.5' to 1.2'
- Greater than 1.2'

